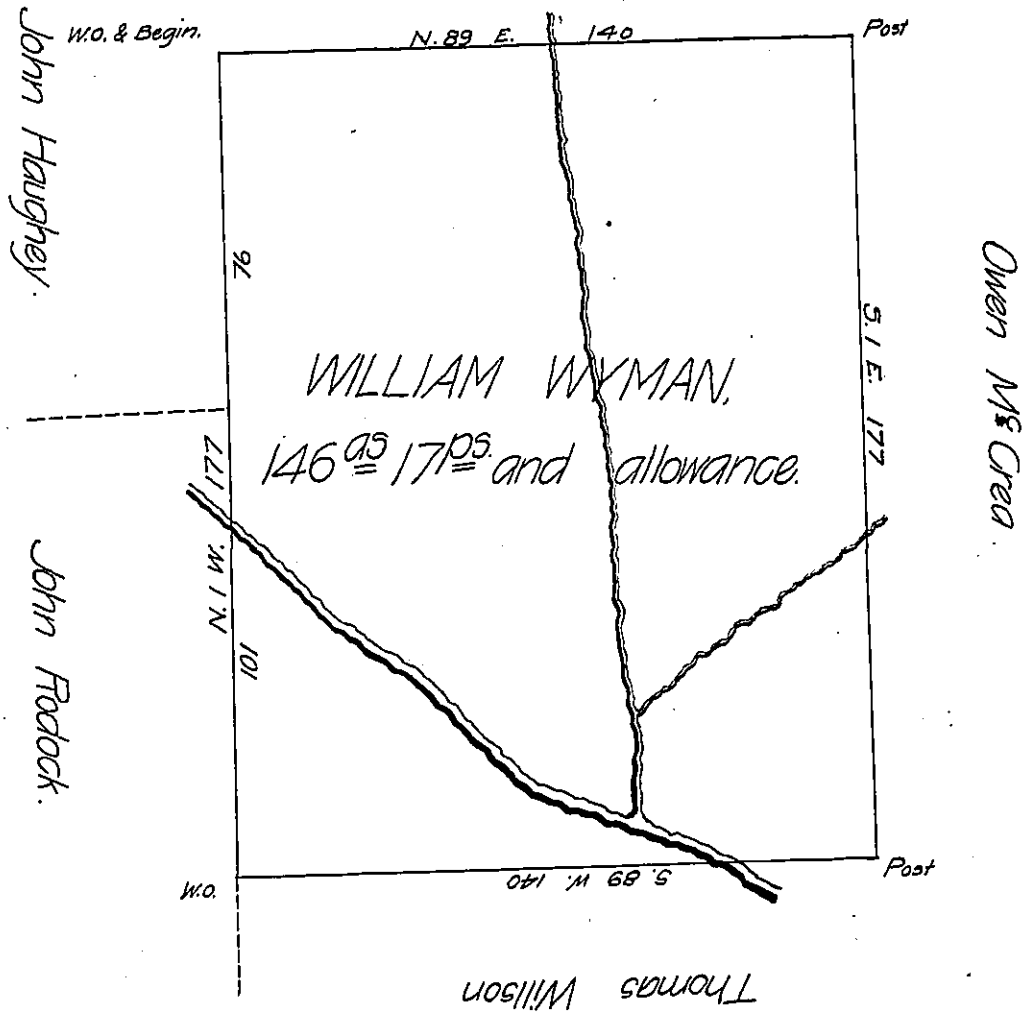


William Hutton



A Draught of a Tract of Land Situate in Menallen Township County of York (late part of the County of Lancaster) containing one Hundre (obl) Six Acres and Seventeen perches and the Allowance of Six Acres ~~of~~ C (obl) and Highways said to have been formerly Surveyed by Thomas Cook (obl) late Deputy Surveyor of Lancaster County for William Wyman, The (obl) found Resurveyed the 19th day of December 1762, agreeable to the (obl)

W^m Parsons, Esq^r, S.G. ~~of~~ Geo. Stevenson (obl)

IN TESTIMONY that the above is a copy of the original remaining on file in the Department of Internal Affairs of Pennsylvania, made conformably to an Act of Assembly approved the 16th day of February, 1833, I have hereunto set my Hand and caused the Seal of said Department to be affixed at Harrisburg, this 20th day of August 1907.

Henry Howell
Secretary of Internal Affairs.